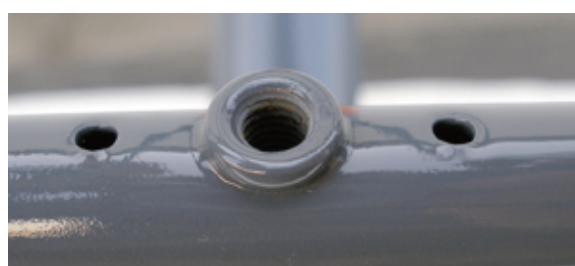
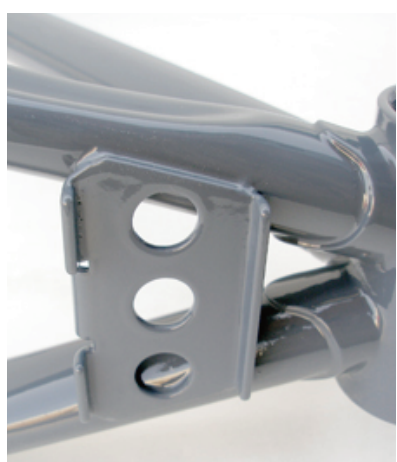


It looks better in person. We're still working on some details...the decal, the color orange. There will likely be two color options, but not sure yet. Both will be gray, but one will have the kidney-bean decals and head tube (for sure), and the other, some kind of orange. Maybe something like this.



The 48 takes 26/559 wheels and has a single top tube. The 54 takes 700c wheel, with a single top tube (no room for two). The 58 (shown) and 62 take 700c and have doublers.



probably head lug lining, not sure. Kickstand plate is always a sure thing now on any non-Roadie bike. Underside of brake bridge bossed & tapped for fendering.



This is a prototype, and we'll have it ready to ride in a week or so. We'll have more pix or the others soon, too.

It's going to be a neat bike. We're all really happy with it. Some little things will change, but maybe not things you'd notice. See the black and gold edging on the seat tube decal? It may go to cream to match the lug lining...if we have lug lining.

The downtube decal may be shifted a bit toward the top centerline of the tube for easier reading from head height. The orange may darken. It won't lighten, for sure.

Also, we're trying for a hair more clearance at the seat stays, so it'll easily fit the monster Schwalbe reddish tires, whatever they are. The Monster Mash? The Radical Ralf? Fat Frank! That may be it. Keven knows, and he's on top of it.

Anyway, we aren't settling any of the details yet, but it'll come out fine.